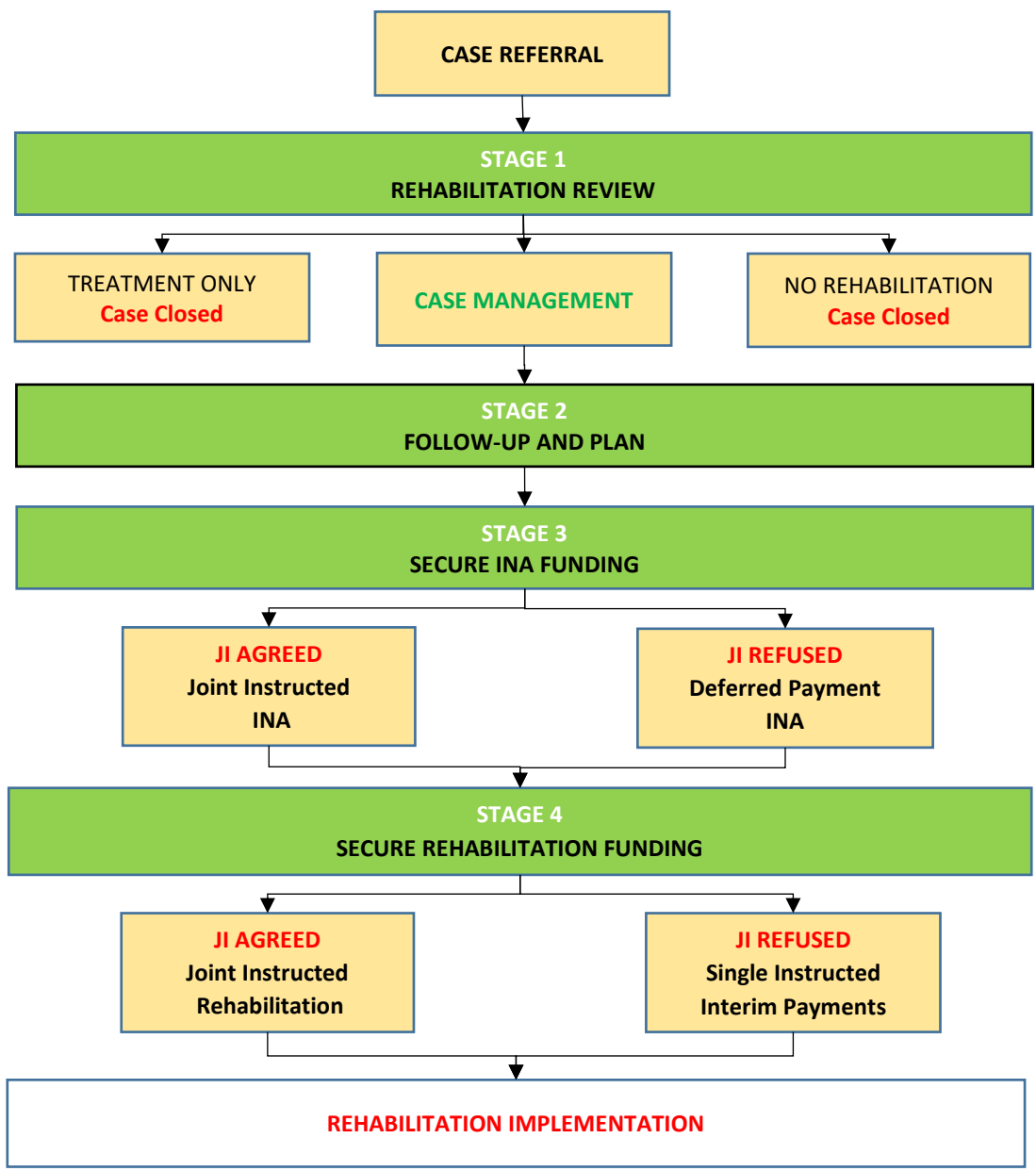


REFERRAL GUIDE

Medicess has been working to develop a new generation of Rehabilitation Screening and Funding Services. These **FREE** services have been developed to help you ensure that injured parties receive the very best care and rehabilitation from day one of the claim.

REHABILITATION PROCESS & FUNDING SCHEME





REFERRAL GUIDE

STAGE 1 – REHABILITATION REVIEW

The first of step is for us to provide you with FREE a clinical Rehabilitation Review Our doctors will report on the most likely clinical position of injured party and what rehabilitation if any would be of benefit to them together with likely costs. We will indicate one of the following:

- 1) **Case Management** – the injured party may have multiple needs that require managed rehabilitation
- 2) **Treatment Only** – the injured party would benefit from some simple treatment
- 3) **No Rehabilitation Required** – the injured party does not need any treatment

STAGE 2 – FOLLOW-UP AND PLAN

Medicess will follow-up on all cases where **case management** is indicated. We will discuss the case with you to and develop a case plan tailored to the injured party's needs and the needs of your case.

STAGE 3 – SECURE INA FUNDING

Medicess will attempt to secure funding for an INA from all parties if required to do so. We will complete a Rehabilitation Request if it is necessary and send it to the defendant and liaise with them.

Where joint instruction is not possible Medicess may offer the INA on a deferred payment basis if this is required.

STAGE 4 – SECURE REHABILITATION FUNDING.

On completion and agreement of the INA Medicess will seek joint instruction for the ongoing joint rehabilitation funding.

If joint instruction is still not possible, Medicess can assist in securing interim payments.

REFERRAL CRITERIA

- 1) **New Multi-track Cases** with liability prospects
- 2) **Existing Multi-track Cases** where ML reports indicates further treatment

MAKING A REFERRAL

By Phone: 01256 341660

By Email: cases@medicess.co.uk

Complete the referral sheet attach the Initial Client Contact Report/ML Reports etc.

On-Line: <https://www.medicess.co.uk/refer>

Complete the online referral form attach the Initial Client Contact Report/ML Reports etc.